

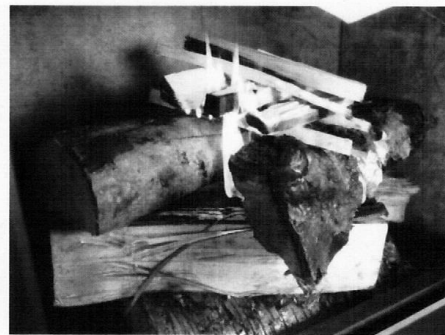
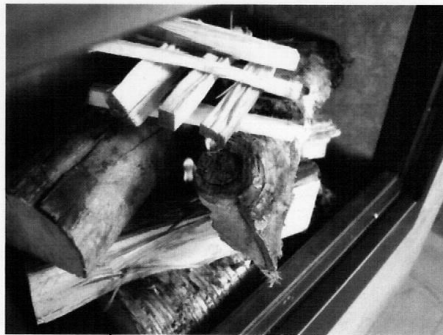
How To Operate Your New EPA Appliance

We strongly recommend starting a fire using the **TOP-DOWN METHOD** for optimal results.

Please Note: The first fires must be smaller to cure the unit. (Max. 3 medium logs)



- You will need **4 to 6 average size logs**, a **fire starter** (just like the one we supplied in the unit) and some **kindling wood**.
- Place log 1 & 2 at the bottom of the firebox.
- Place log 3 & 4 across log 1 & 2.
- Add fire starter in the middle of log 3 & 4.



- Place log 5 & 6 on top of log 3 & 4.
- Add kindling wood directly on top.
- Activate the primary air control by pushing the left side lever inwards.
- Light the fire starter.
- Close the door without locking it & observe.
- Once the fire starter is well lit and the flames are burning kindling wood above, lock your fireplace door and enjoy your fire!